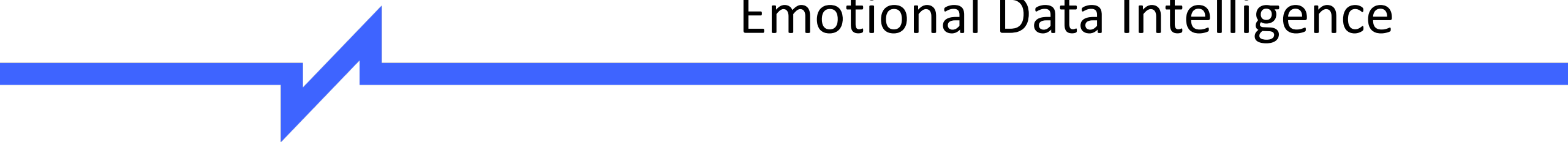




Stockpulse

Emotional Data Intelligence





Who we are

We are a data analytics company
specializing in **Emotional Data Intelligence**



What we do



We improve and support **data-driven, quantitative decision making** for a broad range of participants in the financial markets by collecting, analyzing, and connecting **alternative data** from worldwide online sources with **deep learning** and **artificial intelligence**.



Stockpulse provides unique information for investors

The Emotional Value of Asset Allocation





What we cover

2

Million companies

3

Million messages daily

10

Years historical data

20

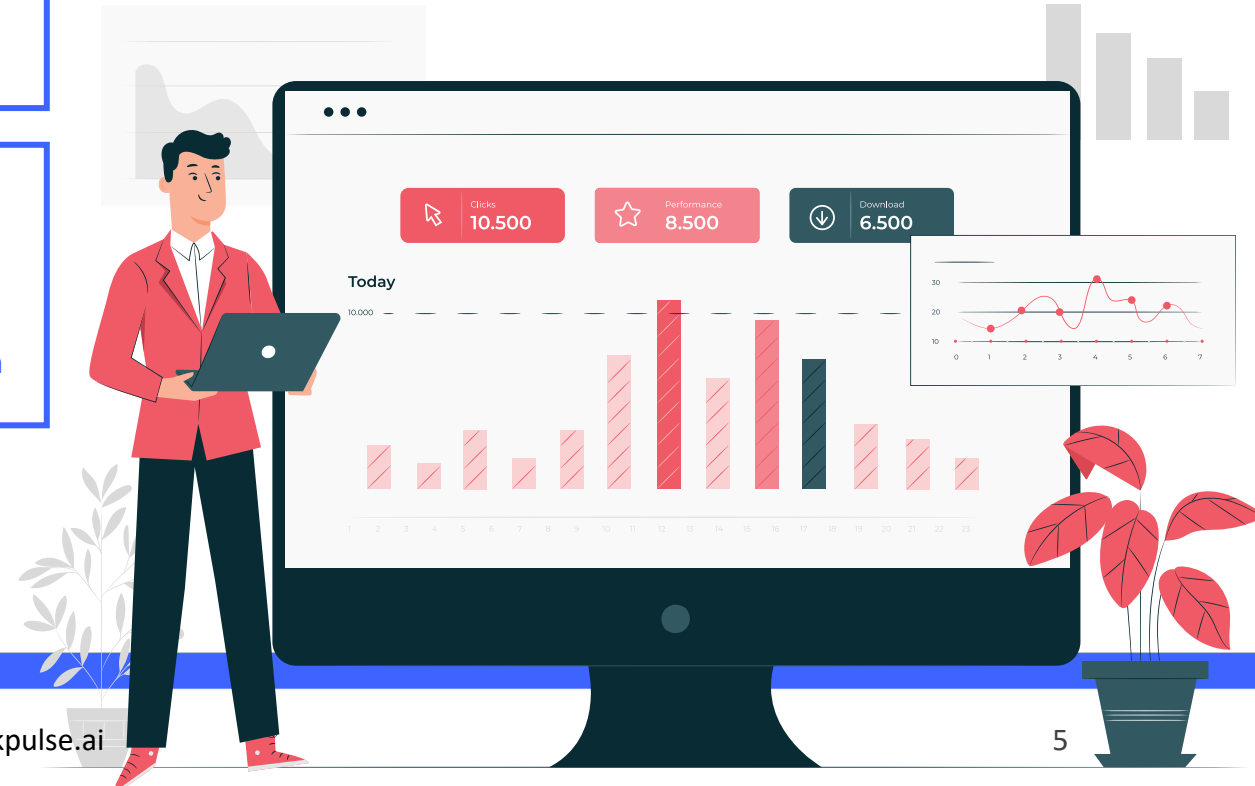
Terabyte per month

60

Million sources

90

Percent Social Media





The Stockpulse Method



We use **NLP** to analyze Social Media squawk in **English, German, and Mandarin.**

We map more than **2 million** companies in **real-time** to different identifiers, and connect it across different data sources.

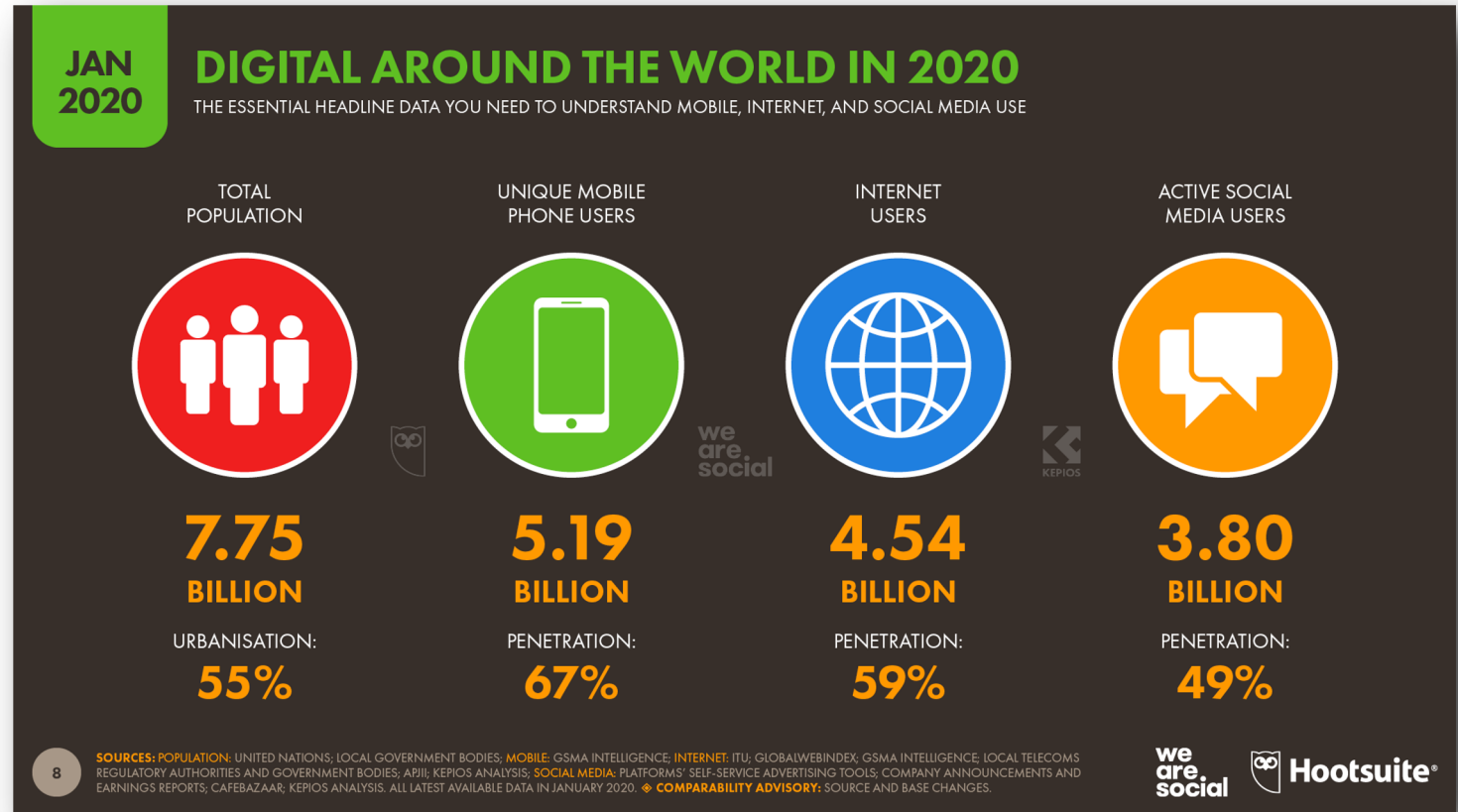
We apply **Deep Learning** and **Artificial Intelligence** to deploy alternative data from Social Media and to derive **trading signals.**



Social Media changes the Investment Style

Social Media is the crucial force for smart investment decisions driven by emotions.

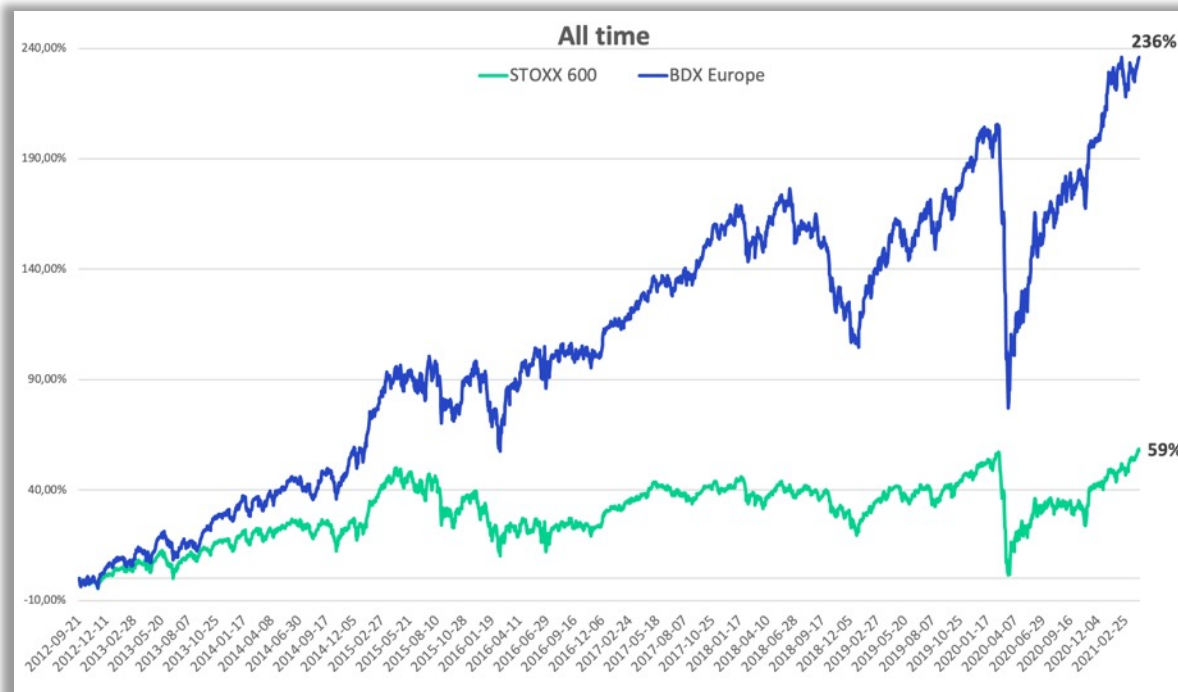
Emotional Data Intelligence screens and processes alternative data sources and converts it into comprehensible and customized solutions.



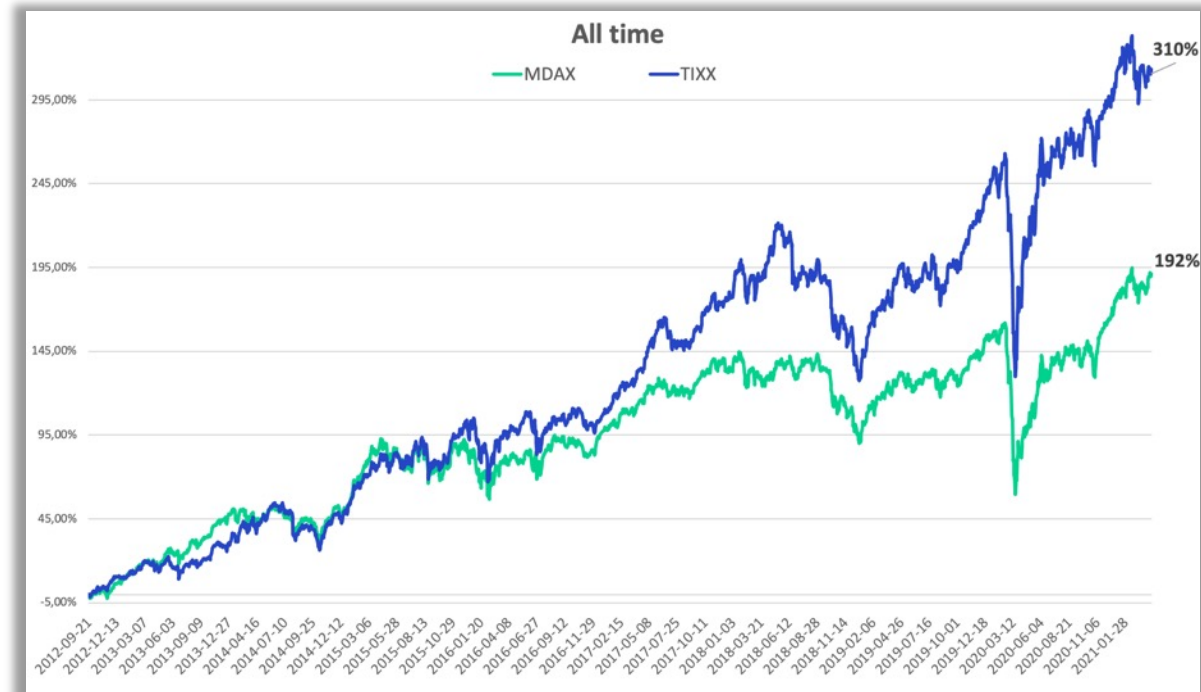


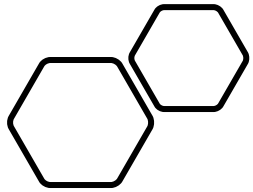
Stockpulse improves your Performance

Europe Big Data Sentiment Index (DE000SLA7W00)



Deutschland Top Aktien Index (DE000A26RWY8)





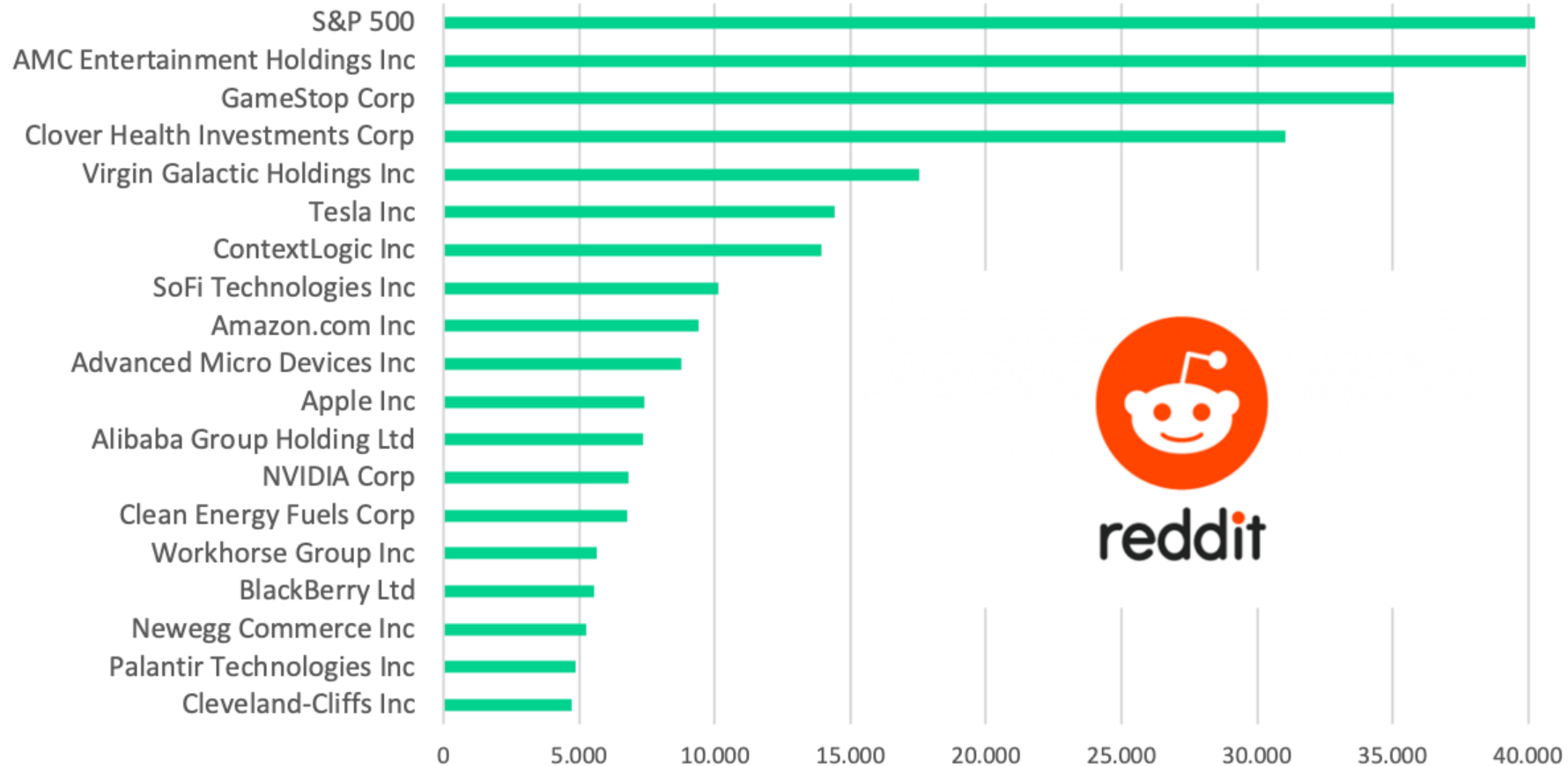
The **New** Landscape

During Covid-19, investors forced to stay at home, encouraged by dovish central banks and massive fiscal stimulus, flooded the markets.

Generation **Y&Z** opened millions of commission-free trading accounts and established a retail investment force pushed by **Social Media** trading platforms.



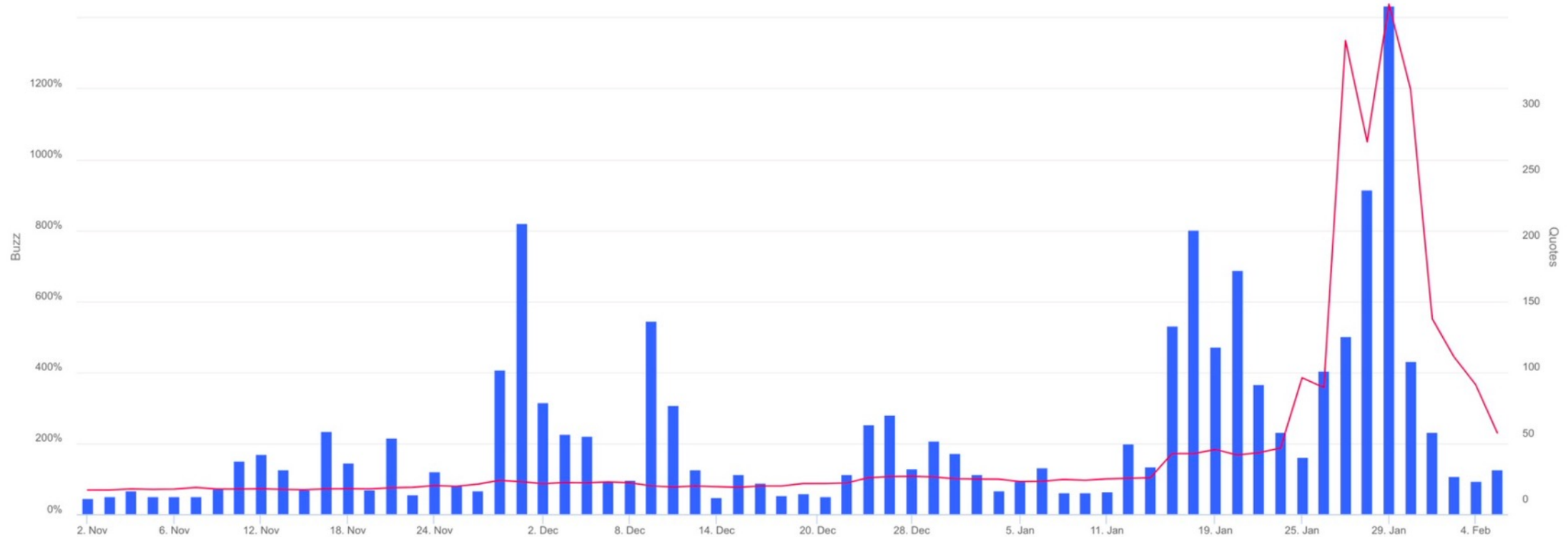
Top Mentions on **Reddit** in July 2021





A Campaign of Vengeance and the Retail Revolution

The **Reddit** Retail Rebellion vs. Melvin Capital



GME Chart vs **Stockpulse** Buzz



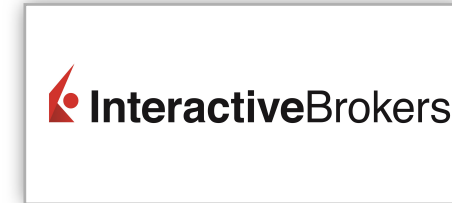
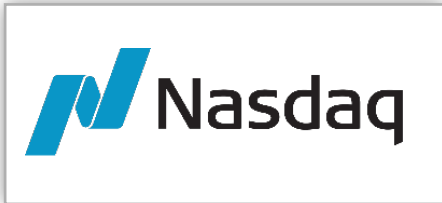
Social Media, the new Sheriff in Town

Stockpulse provides you with the data sets you need to stay ahead of the markets!





Stockpulse serves some of the largest institutions in the financial markets



Stockpulse GmbH
Gerhard-von-Are-Str. 2
53111 Bonn
info@stockpulse.ai
+49 228 227 875 36
www.stockpulse.ai



Stockpulse



Dr. Stefan Nann
CEO & Co-Founder

stefan.nann@stockpulse.ai